

Mississauga Hockey League

Half-Ice Hockey Framework



Starting in the 2018-2019 season, the Ontario Hockey Federation mandated that U8-aged players (formerly Minor Novice) players will participate in modified-ice games, followed by U9-aged players (formerly Novice) in 2019-2020. In accordance with the Ontario Hockey Federation mandate and in consideration of the recommendations, The Mississauga Hockey League (MHL) and the 6 Member Hockey Associations (MHAs) have introduced modified-ice games for the U8 & U9 Divisions as follows.

[Table of Contents \(document updated to include revisions to November 27, 2019\)](#)

1	Gold Divisions.....	2
1.1	Season Structure.....	2
1.1.1	Regular Season.....	2
1.1.2	End of Year Tournament.....	2
1.2	Game Structure.....	2
1.2.1	Game Play.....	2
1.2.2	Rink Setup.....	2
1.3	Team Structure.....	3
1.4	Officiating.....	3
1.5	Rules of Play.....	3
1.5.1	Penalties.....	4
1.6	Scheduling.....	4
1.7	Game Sheets.....	4
2	House League (see separate document)	

Mississauga Hockey League

Half-Ice Hockey Framework



1 Gold Divisions

1.1 Season Structure

1.1.1 Regular Season

- No Convening period
- On average, two MHL games per week
- Standings are kept for seeding the end of year tournament

1.1.2 End of Year Tournament

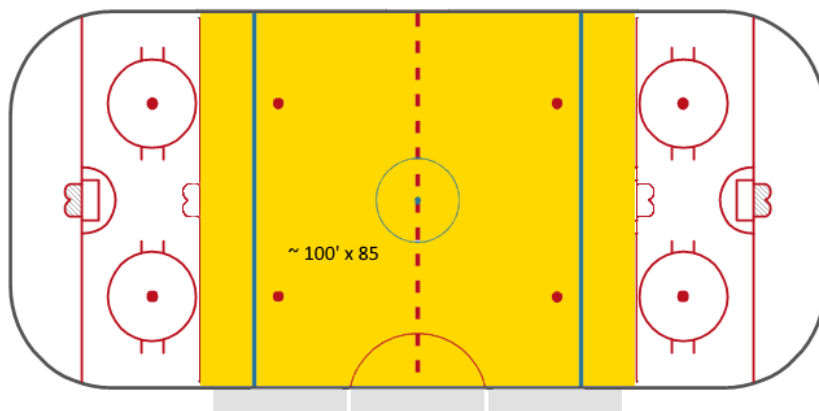
- End of year tournament, following the regular season
- Tournament format to be decided by the Playoff Committee

1.2 Game Structure

1.2.1 Game Play

- U8 Teams will compete 4 on 4, U9 Teams will compete 5 on 5. This shall be adjusted to 3 on 3 if each Team has 9 players or fewer (including the goalie).
- Teams will use separate player benches and will not switch ends at the midpoint.
- Games will be 48 minutes in length (2 x 24-minute periods) plus a 2-minute warm-up and 1-minute between periods. Teams will be allowed one 30-second time-out each.
- Player shifts will be 2 minutes in length. A buzzer will sound to signal line changes.
- Scores are posted during the games

1.2.2 Rink Setup



- Boards divide the ice to reduce the surface.
 - Temporary boards placed to provide a 100' playing surface.
 - Games will be played using Junior-sized nets for U8 Gold, full-sized nets for U9 Gold.

Mississauga Hockey League

Half-Ice Hockey Framework



1.3 Team Structure

- Rosters will consist of 13 players (including 1 goalie) at the U8 level, 14 players (including 1 goalie) at the U9 level.
- Players are chosen via MHA Tryouts
- There is no Convening for this division

1.4 Officiating

- One timekeeper per game
- Two referees per game

1.5 Rules of Play

- Faceoff at the beginning of each period
- Once the buzzer/whistle sounds for each shift change, players must immediately relinquish control of the puck and vacate the ice. All skaters from both teams from the preceding shift must be off the ice prior to the next shift entering the ice to resume play. The goaltenders may not play the puck during the line change.
 - Failure to immediately relinquish control of the puck at the buzzer or new players entering the ice surface prematurely may result in a minor penalty for the offending team.
 - During the line change the Ref will retrieve the puck and place it on the centre ice dot. During the line change the Ref will hold up his arm... once his arm is lowered, that will signify when the next shift of players may leave their bench.
- When play has stopped due to the goaltender freezing the puck or a goal has been scored, the Referee will signal the attacking players to vacate to the opposite side of the centre ice mark. Once all attacking players have exited beyond the mark, the players can re-engage in play once the opposing team has played the puck.
- If a puck goes out of play, the Referee will provide a new puck to the goaltender and the attacking team will exit the opposite side of the centre ice mark and the players can re-engage in play once the opposing team has played the puck. The Home team will be asked to supply game pucks.
- No icing, no offside.
- Note:** Novice division will revert to full-ice hockey and the standard MHL rules of play (i.e. 5 on 5, no buzzer system, offside, icing, etc.) in mid-January. The exact date for this changeover will vary from year to year but will be noted in the League schedule.
- In the event of an injury, the whistle will be blown, play will stop, the clock will stop, and the injured player will be attended to.

Mississauga Hockey League

Half-Ice Hockey Framework



1.5.1 Penalties

- a. All minor penalties will result in the offending player being removed from the ice. As soon as an infraction is observed, the Ref will blow the whistle to stop play and remove the penalized player back to his bench. The clock will stop for 15-seconds (maximum) while this takes place. Meanwhile, the other Ref will reorganize for a face-off in the zone favouring the non-offending team and play will continue with the offending team playing short-handed for the remainder of the shift. Play will continue normally (i.e. 4 on 4) once the next shift commences.
- b. Offsetting penalties will result in both offending players being removed back to their benches with play resuming 3 on 3.
- c. Major penalties will be treated as above, but the offending player will be removed from the game. Referees will be required to advise the League Office of any and all Major penalties called in the Half-Ice divisions.
- d. An infraction that requires a penalty shot be called will result in the clock being stopped and the non-shooting players being removed to the area in front of their respective benches. Once the penalty shot has been taken, play will resume (and the clock will re-start) with a face-off at centre.

1.6 Scheduling

- a. Games Scheduling
 - One game on Saturday and another game on Sunday.
 - There will be no weeknight games, though there may be the occasional weeknight game in the U9 division once games revert to full-ice in mid-January.

1.7 Game Sheets

- To be completed prior to each game.
- To be provided by the Home team, who will complete their side and then pass it along to the Visitor team for them to complete and pass along to the Timekeeper.
- Copies for each team will be available for pick-up following each game.