

**WELCOME TO
YOUR TEAM!**

www.hockey.on.ca



FIRST SHIFT INFO SESSION

Saturday, October 29, 2016





THE FIRST SHIFT

Launched in 2012, Grow the Game is a global initiative to add 1 million new players the game of hockey by 2022, with Canada serving as the starting point of those efforts. Hockey in Canada has experienced historically low participation growth rates over the last few years, and today approximately 90% of Canadian families and their children choose not to play hockey.

The goal is to introduce families to hockey in a fun and affordable fashion.





THE SECOND SHIFT

The MHL Second Shift Program was designed by the Mississauga Hockey League as a means to “bridge” the time gap between the end of First Shift and the start of League hockey the following Fall.

Second Shift is a further six (6) weeks of hockey with more emphasis on actual game play (with Referees and goaltenders).

The time and place will be essentially unchanged from First Shift.

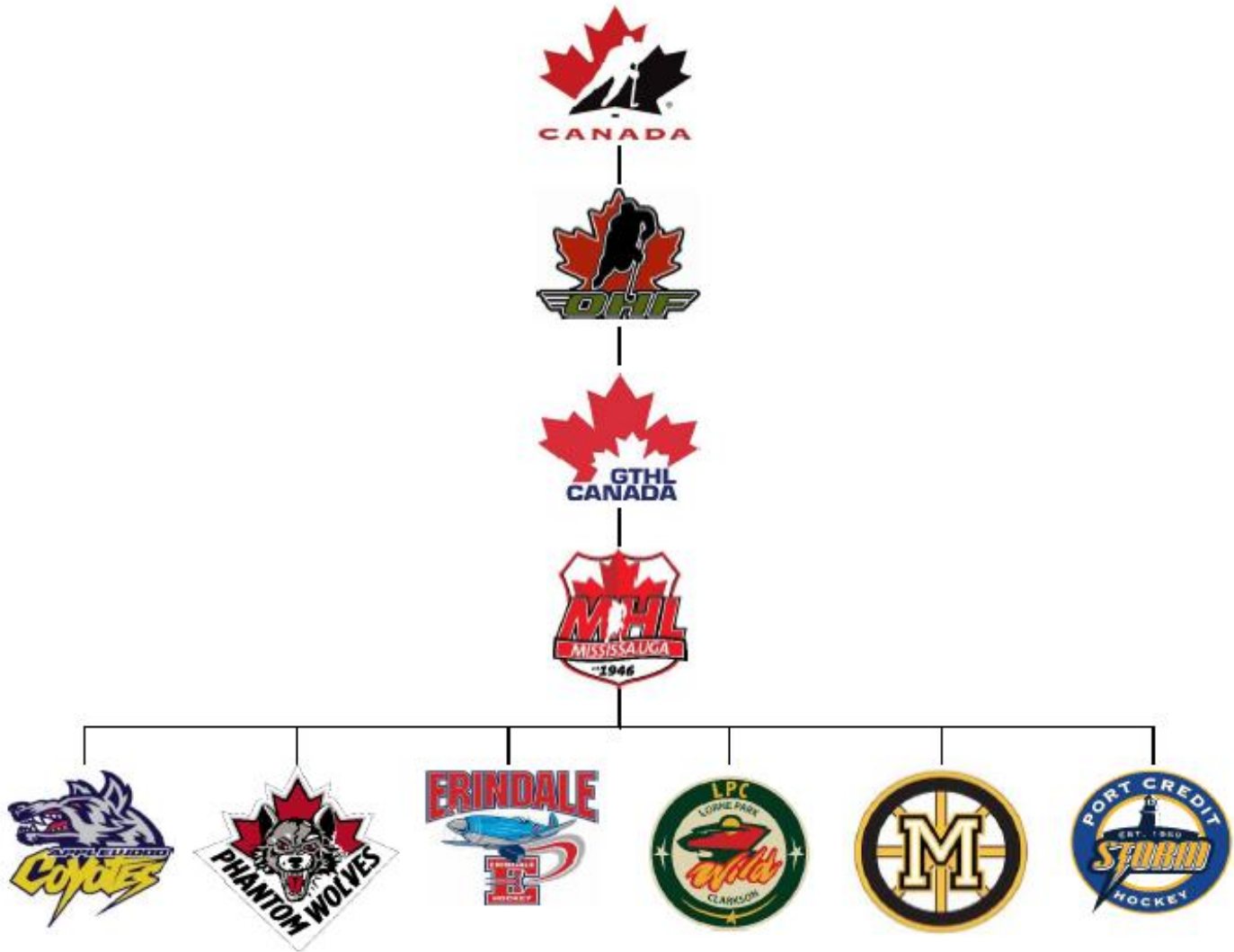
Cost will be \$150.00, of which \$75 will be refunded if you register with one of our MHL Area Associations for next Fall. (i.e. the 2017-2018 hockey season.)

And by the way, we’ll be looking for parent volunteers to assist with the Second Shift





HOCKEY HIERARCHY





ABOUT THE MHL

The MHL is a non-profit organization, affiliated with the City of Mississauga, set up to provide recreational hockey to the youth of Mississauga, both boys and girls, ages 4 through 20.

Non-residents are welcome, subject to restrictions on total numbers, and are assessed a non-resident participation fee by the City of Mississauga.

There are no geographic boundaries within Mississauga and the choice of Association is up to you.

Annual registration takes place throughout the Spring, commencing on May 1st.

<https://hockey.on.ca/registration-process/>

And beginners ARE welcome!



HOW IS THE MHL STRUCTURED?

Tyke (or Timbits) Hockey for 4-6 year olds.

House League Hockey for 7-20 year olds.

Rep (“A”) Hockey for 9-17 year olds (tryouts in April)

Gold level (“A-ish”) for 7-8 year olds (tryouts in April)

Novice, Atom, Peewee, Bantam, Midget, Juvenile

In the House League, players are tiered by skill level (Red, White, Blue, Green) and assigned to teams with other players of equivalent skill levels. This ensures balanced and fair teams with equal opportunities for all players.



HOW IS THE MHL STRUCTURED?

For players looking for higher levels of hockey – AA & AAA – tryouts occur in April and are offered by GTHL Clubs.

As to cost, Tyke hockey is about \$400, House League hockey about \$700. The cost includes one practice and one game per week, for 26 weeks, and a snazzy uniform from your respective Area Association.

For those families who might find this a bit too expensive, the MHL is affiliated with a registered charity by the name of The MHL Play-More Program. Play-More offers financial assistance to MHL players who might not have an opportunity to play otherwise.

<http://mhlplaymore.com/>





PLAYER SAFETY

Insurance – All registered players (and coaches) are insured (through Hockey Canada) for all sanctioned team activities.

Body-Checking – NONE at the Tyke, Gold, and House League Levels. Permitted only at the “A” level, Minor Midget (15 year olds) and up.

Concussions – Very rare within the MHL, but if they occur, the MHL believes that the participant’s safety and health is paramount and should be considered first and foremost in determining the most appropriate time at which a player may return to play if he/she has suffered a suspected or identified head injury.

Discipline Emphasis – The MHL Discipline Committee works together with the MHL Referee Liaison Committee and the Referee Supervisors to ensure that rules are adhered to and that player safety is closely monitored.

Volunteers – All of our Coaches are screened by their local Police authority, including a Vulnerable Sector Search.



QUESTIONS?

Thank you. We will now try and answer any questions that you may have.

???